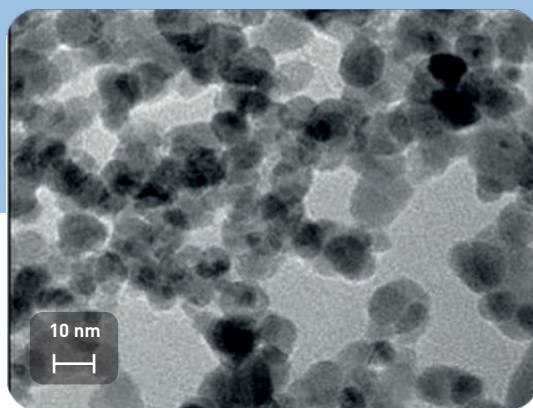


ALUMINIUM(III)-OXIDE

Al₂O₃-150


 TEM of Al₂O₃

TECHNICAL DATA

PROPERTIES		TESTING METHOD	
Specific surface area	(m ² /g)	150 ± 5	BET
Primary particle size	(nm)	20 - 40	TEM
Agglomerate size	(µm)	0.3 - 0.5	DLS
Colour		white	
Crystallographic phase		mixed phases	XRD
Purity	(wt.-%)	> 99	ICP
Bulk density	(kg/m ³)	100 -200	

POTENTIAL APPLICATIONS

- Polishing agents
- Catalyst supports
- Ceramics